

CBN8000 Internet Modem Set Up Guide



Before you begin:

> Review contents of your install kit:

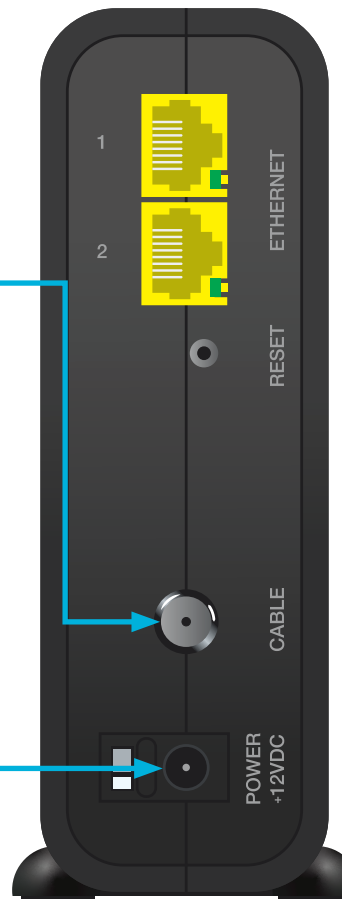
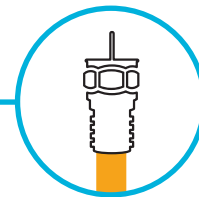
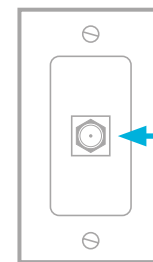
- A coax cable to connect to the network
- An ethernet cable to connect your device
- CBN8000 modem and power cord

> Read through instructions

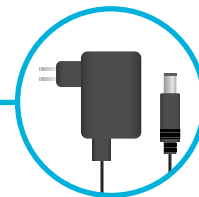
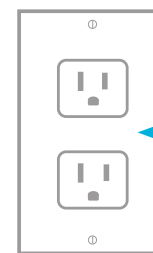
You can find additional self-help resources at acanac.com/contact.

Part 1: Connecting the modem

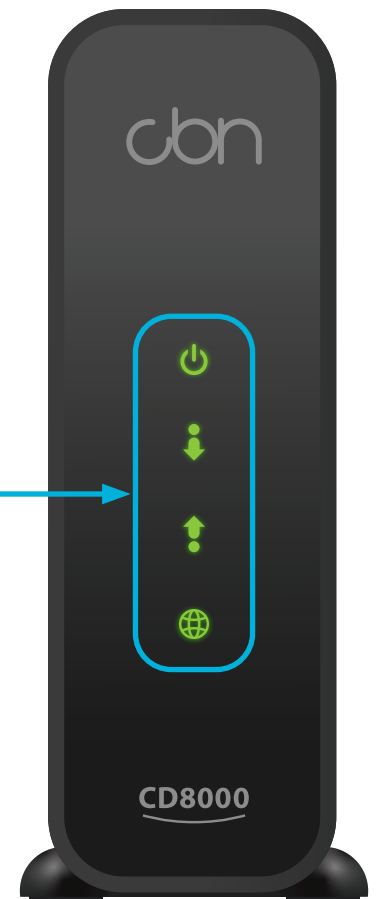
- 1** Connect one end of the coax cable to the 'Cable' port on your modem, then connect the other end of the cable to a nearby coax wall outlet.



- 2** Attach the power cord to the 'Power' port on your modem and plug into a nearby electrical wall outlet.



- 3** Turn the modem on, and wait until all lights are on (the GLOBE light may flicker). This can take about 5 minutes.



Check out the other side of the guide to see how to connect your devices.



Looking for more products and services? Visit acanac.com

Give our Customer Support team a ring at **1-866-281-3538**

Setting up your High-Speed Internet Service



Part 2: Connecting your devices

Option A: Direct Connection

If you are only connecting to one device, you can connect directly to the modem.

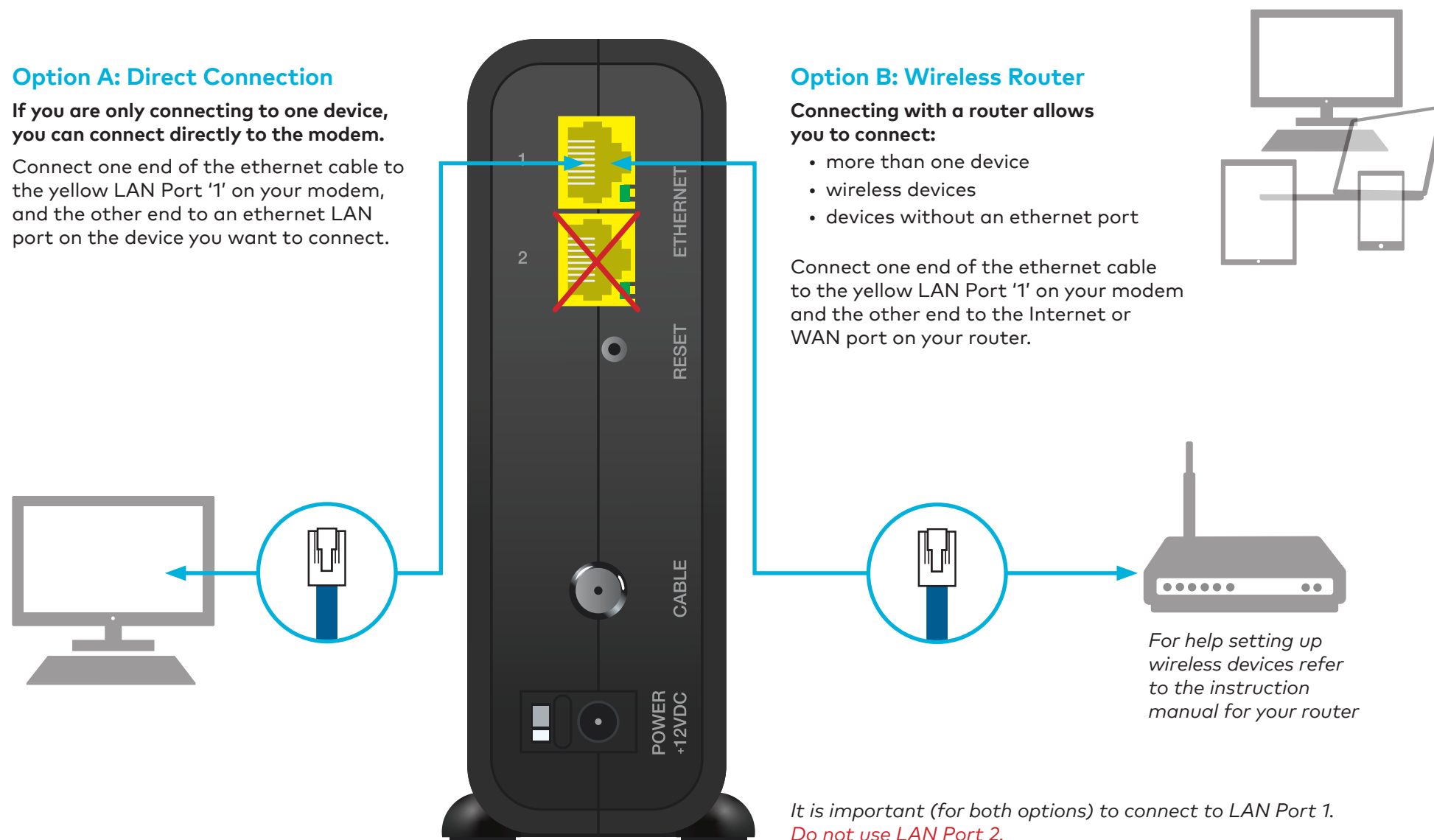
Connect one end of the ethernet cable to the yellow LAN Port '1' on your modem, and the other end to an ethernet LAN port on the device you want to connect.

Option B: Wireless Router

Connecting with a router allows you to connect:

- more than one device
- wireless devices
- devices without an ethernet port

Connect one end of the ethernet cable to the yellow LAN Port '1' on your modem and the other end to the Internet or WAN port on your router.



For help setting up wireless devices refer to the instruction manual for your router

It is important (for both options) to connect to LAN Port 1. Do not use LAN Port 2.

Crank the tunes and fire up some cat videos—your Acanac High-Speed Internet should be good to go!

210921 Acanac CBN8000 E