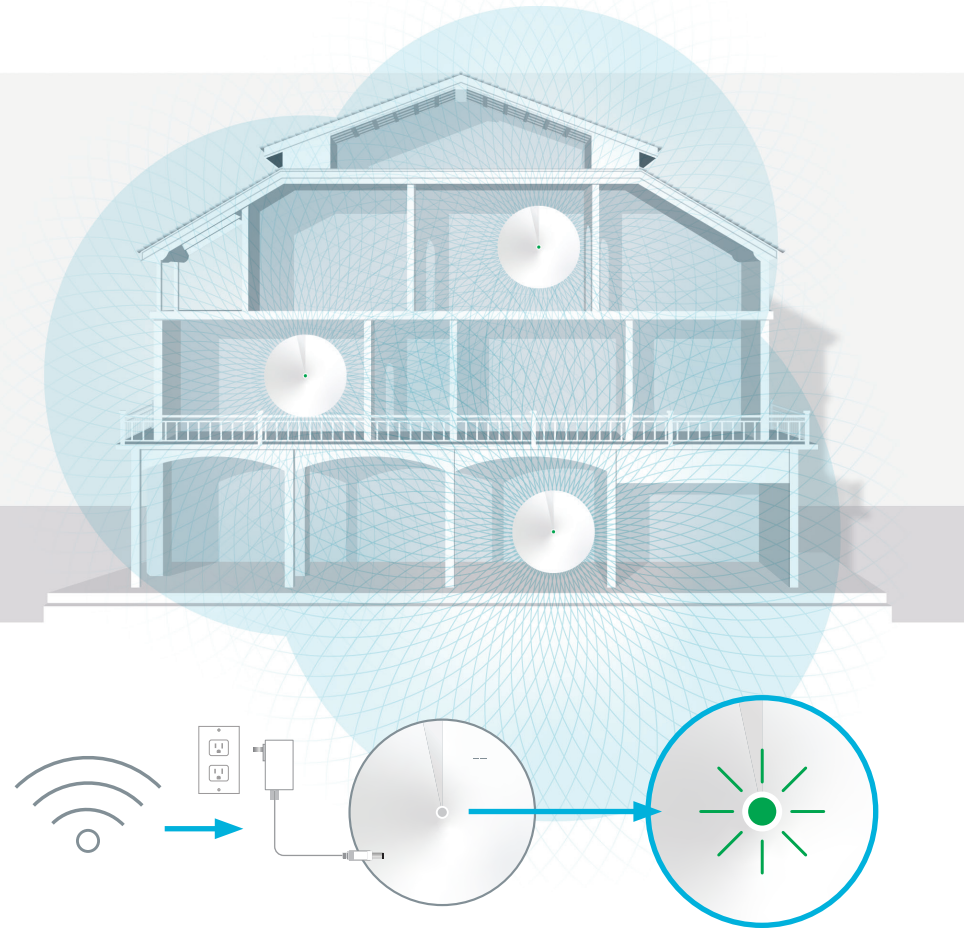


## To install additional Wi-Fi pods

We recommend additional pods to maximize coverage if your home has multiple floors or larger square footage.



- Place the pod in the desired location within range of your Wi-Fi signal and connect the pod to a power outlet.
- When the light on the pod is solid green, your Wi-Fi is now active. If the light is red, position the additional pod closer to an active pod until the light is green the light is green.
- **Tip:** Use your smartphone to test the Wi-Fi strength in the location you are considering for the new pod.

## Connecting Wired Devices

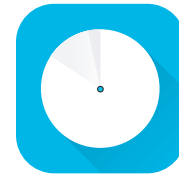
Each Wi-Fi Pod is equipped with two ethernet ports. These ports can be used to connect a nearby device.

For example:

- Home Phone Analog Telephone Adapter (ATA)
- TV Set Top Box
- Gaming Console
- Computer



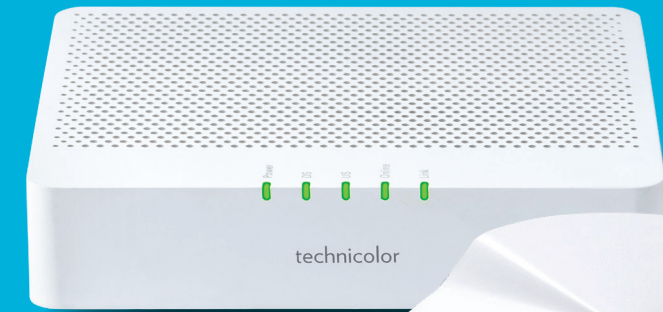
## Download the TP-Link Deco app from the Google Play or Apple App Store.



Use the app to customize your Wi-Fi Network (SSID) name and password.

You will also find other features such as: parental controls, anti-virus and how to create a separate network for guests.

# TC4400/TC4350 Modem and Deco Wi-Fi Pod Set-Up Guide

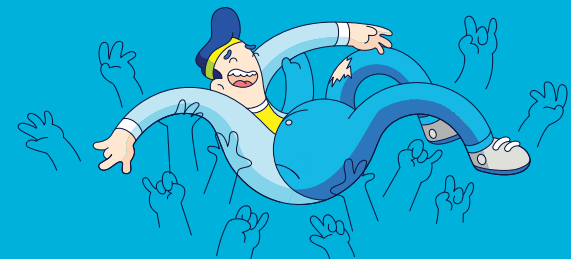


Looking for more products and services? Visit [acanac.com](http://acanac.com)

Give our Customer Support team a ring at **1-866-281-3538**



210831 Acanac\_TC4400/TC4350 Deco Set-Up Guide E



# Setting Up Your High Speed Internet Service and Wi-Fi Network

## Before you begin:

- > **Review the contents of your install kit:**
  - Coax cable to connect to the network
  - Technicolor modem and power cord

- Deco M5 Wi-Fi Pod and power cord
- Ethernet cable for your Wi-Fi pod
- Ensure you follow the steps in order shown

## > Additional Resources:

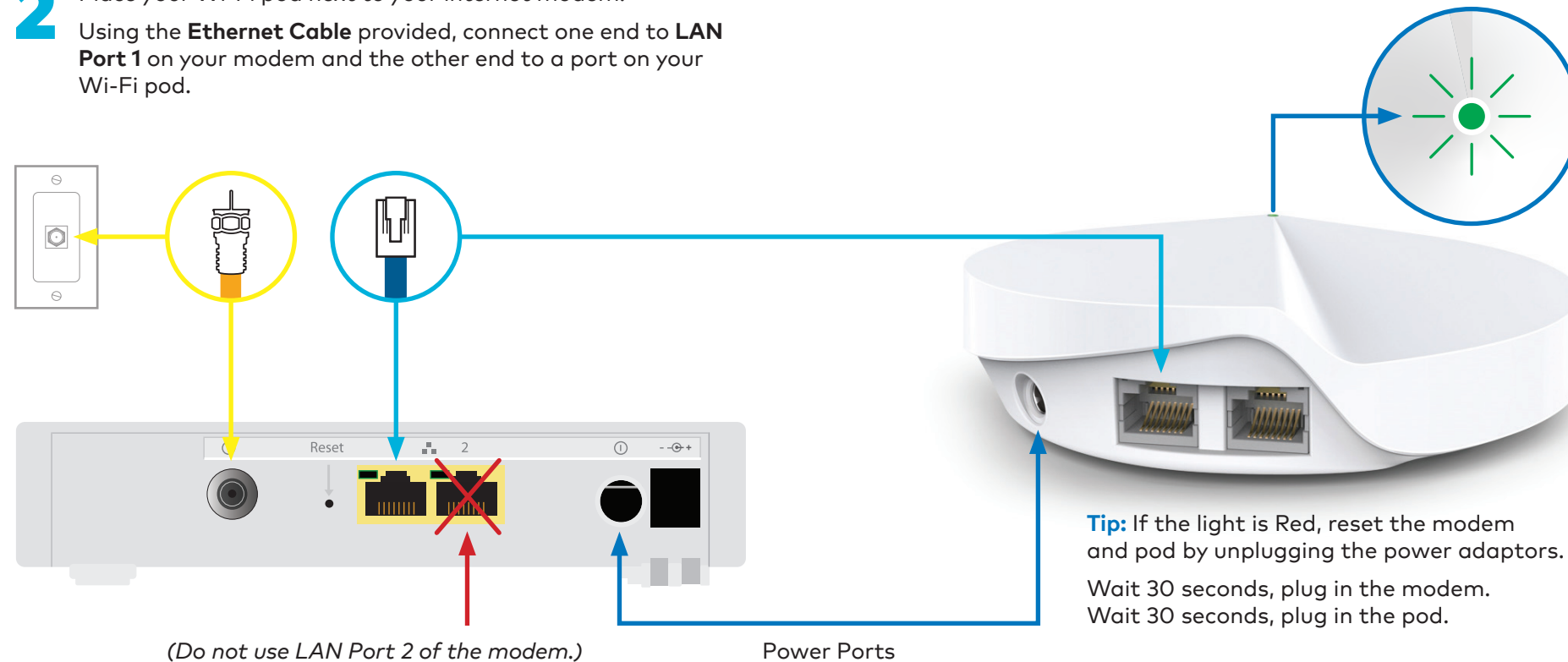
You can find additional self-help resources at [Acanac.com/support](https://www.acanac.com/support).

**1** Connect one end of the **Coax Cable** to the **Cable** port on your modem, then connect the other end to a nearby coax wall outlet.

**2** Place your Wi-Fi pod next to your internet modem.  
Using the **Ethernet Cable** provided, connect one end to **LAN Port 1** on your modem and the other end to a port on your Wi-Fi pod.

**3** Attach the **Power Cord** to the **Power Port** on your modem, then plug the cord into a nearby power outlet.  
Connect your Wi-Fi pod to a **Power Outlet**.  
The Wi-Fi pod light will turn solid green. This can take about 5 minutes.

**4** Go to Wi-Fi settings on a device you would like to connect, and search for available Wi-Fi networks. Select the **Wi-Fi Network (SSID)** and enter the password that matches those found on the bottom of your Deco M5 Wi-Fi pod.



**That's it, you should now be ready to enjoy your Acanac Wi-Fi!**

For help changing your Wi-Fi Network (SSID) name or Wi-Fi password and for additional security tips visit [Acanac.com/support](https://www.acanac.com/support).