

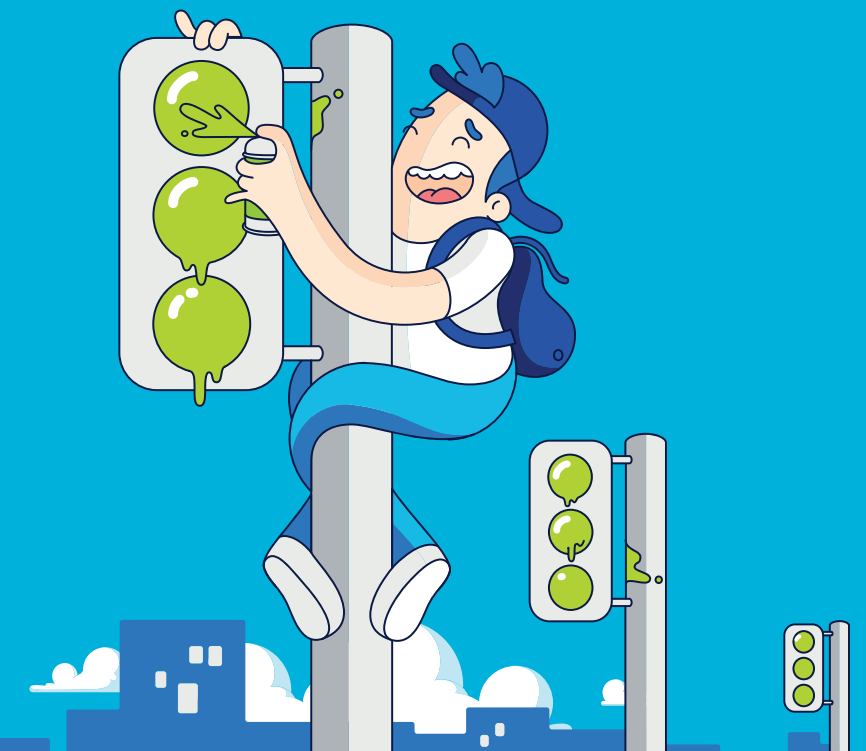
We are here to help. Feel free to contact us with questions or to provide feedback.

For additional information, please visit the FAQ section of our website at www.acanac.com. To provide feedback, please submit a customer review via our website or our Facebook page. For other questions, please call our Customer Experience team at 1-866-281-3538. You can also receive Technical Support at the same number – you can also send us an email at technical.support@acanac.com.

180209_ACANAC_DCL_804N_en.1



High Speed Cable Internet Setup Guide



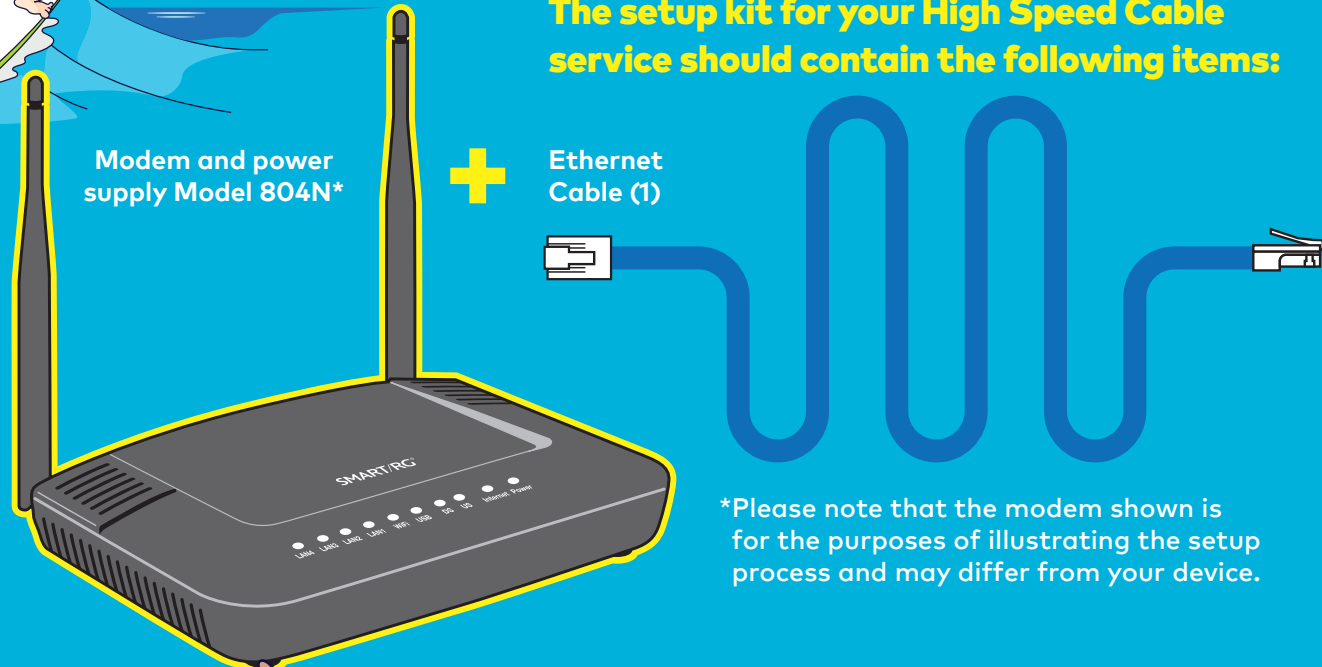
Thank You for choosing Acanac

In order to ensure the smooth setup of your Acanac High Speed Cable Internet service, please follow the easy steps laid out in this guide.

The setup kit for your High Speed Cable service should contain the following items:

Modem and power supply Model 804N*

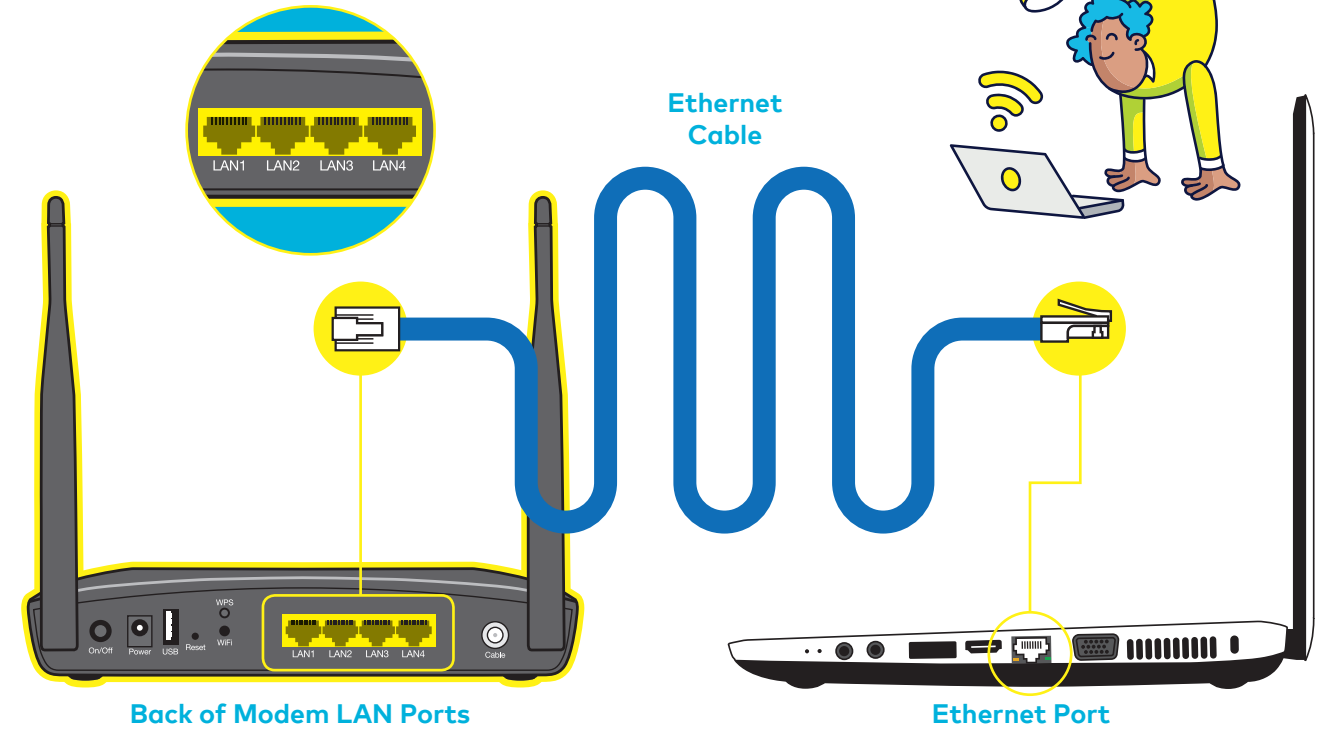
Ethernet Cable (1)



*Please note that the modem shown is for the purposes of illustrating the setup process and may differ from your device.

Before beginning the setup process, please ensure that all of your equipment is turned off.

STEP 2 Using the Ethernet cable provided in the setup kit, connect your computer or laptop to an available LAN port at the back of the modem.

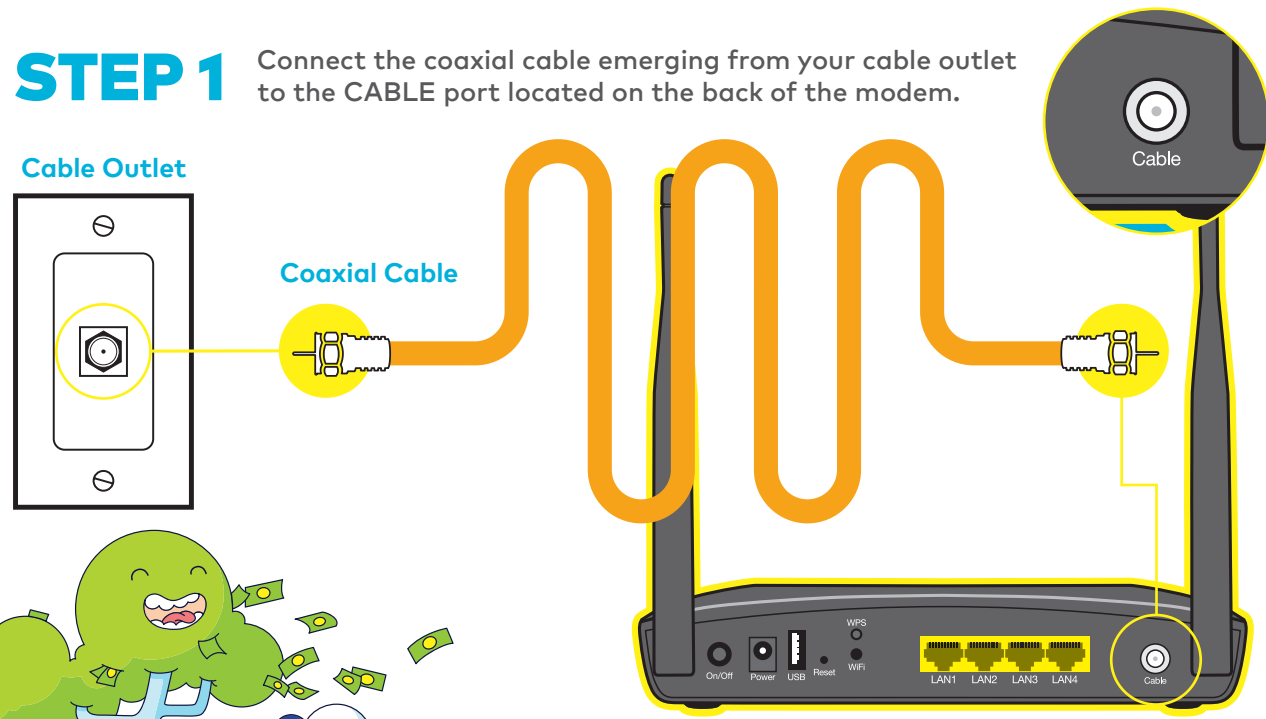


Back of Modem LAN Ports

Ethernet Port

You may now connect the appropriate power adapters to the devices, starting by the Cable modem.

STEP 1 Connect the coaxial cable emerging from your cable outlet to the CABLE port located on the back of the modem.



Cable Outlet

Coaxial Cable

Back of Modem Cable Port

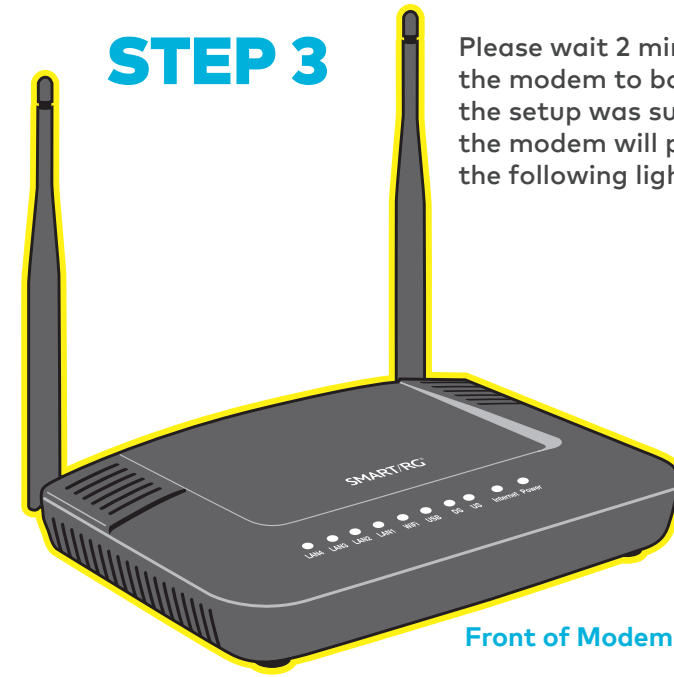
Coaxial cable should be supplied during installation. If you require a longer length of coaxial cable, this can be purchased at most home electronic stores.

STEP 3

Please wait 2 minutes for the modem to boot-up. If the setup was successful, the modem will present the following light status:

Cable Modem Lights

LIGHTS	READ
Power	Solid Green
Internet	Solid Green
U/S	Solid Green
D/S	Solid Green
USB	Off
WiFi	Flickers Green
LAN 1-4	Flickers Green (if connected to a device)



Front of Modem

CONGRATULATIONS! YOUR SETUP IS NOW COMPLETE.

