

We are here to help. Feel free to contact us with questions or to provide feedback.

For additional information, please visit the FAQ section of our website at www.acanac.com. To provide feedback, please submit a customer review via our website or our Facebook page. For other questions, please call our Customer Experience team at 1-866-281-3538. You can also receive Technical Support at the same number – you can also send us an email at technical.support@acanac.com.

171201_ACANAC_515AC_en.1



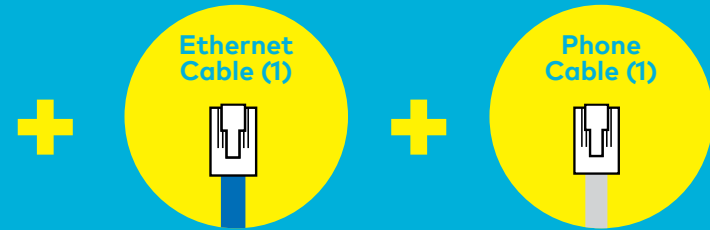
High Speed DSL Internet Setup Guide



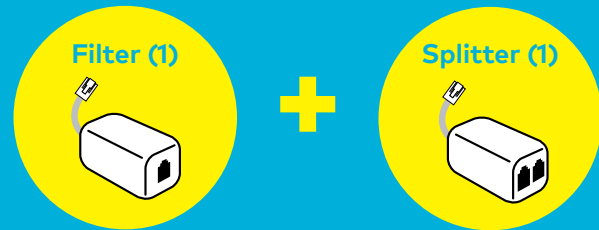
Thank You for choosing Acanac

In order to ensure the smooth setup of your Acanac High Speed DSL Internet service, please follow the easy steps laid out in this guide.

The setup kit for your High Speed DSL service should contain the following items:



For customers with a landline phone, your setup kit will also include a splitter and filter. Please follow special instructions in Step 1 and Step 4.



Modem SR515AC+ and power supply

*Please note that the modem shown is for the purposes of illustrating the setup process and may differ from your device.



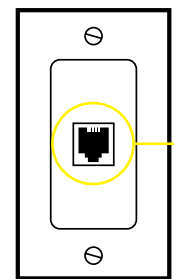
Before beginning the setup process, please ensure that all of your equipment is turned off.

STEP 1

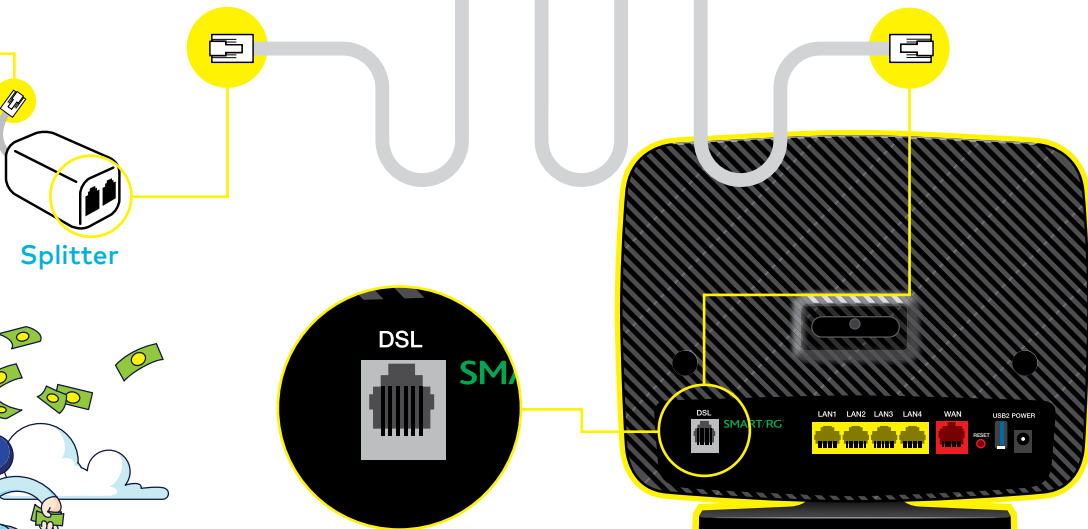
Using the phone cable provided in your installation kit, connect the grey DSL port located on the back of the modem SR515AC to your phone jack.

For customers with a landline phone, connect the grey DSL port located on the back of the modem to the DSL port of the splitter. Then connect the splitter to your phone jack.

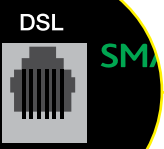
Phone Jack



Phone Cable



Splitter

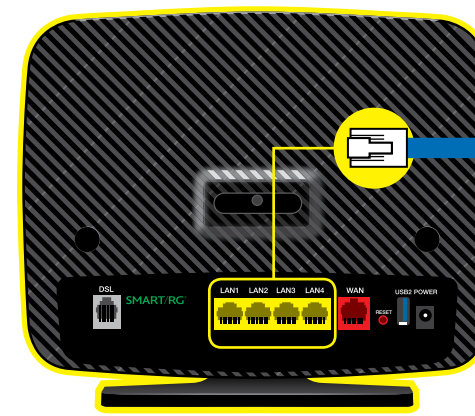


Back of Modem SR515AC

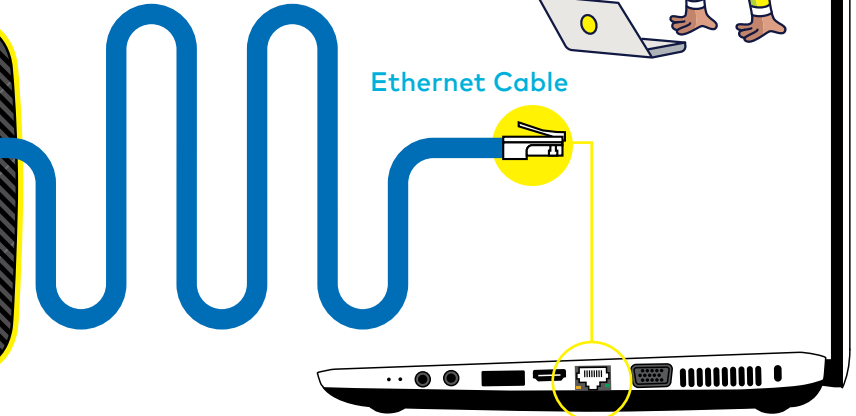


STEP 2

Using the Ethernet cable provided, connect the modem SR515AC LAN port to your laptop (or the WAN port of your router if you would like a network setup).

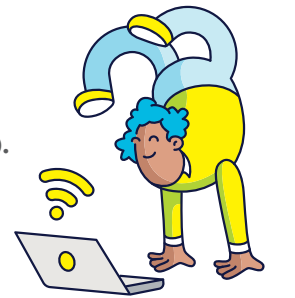


Back of Modem SR515AC



Ethernet Cable

Ethernet Port



You may now turn all your devices back on.



Front of Modem SR515AC

STEP 3

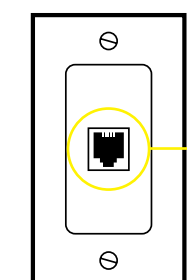
Please wait 2 minutes for the modem to boot-up. The Power and DSL lights should become solid green. The Internet and the LAN1 lights should become solid or blinking green. If you do not see the mentioned lights, please repeat steps 1 and 2. Ensure that the switch button, located in the back of the modem, is depressed.

DSL Modem SR515AC Lights

Lights	Read
Power	Solid Green
LAN1-4	Solid or Blinking Green (Off if unused)
WLAN	Solid Green if WiFi enabled (Off if unused)
DSL	Solid Green
Internet	Solid or Blinking Green

STEP 4

For customers with a landline phone, the filter(s) must be connected between your phones and their corresponding phone jacks, as illustrated below.

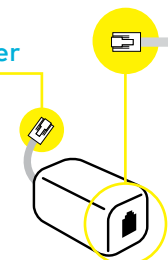


Phone Jack



Filter

Phone Cable



Home Phone

CONGRATULATIONS! YOUR SETUP IS NOW COMPLETE.

